



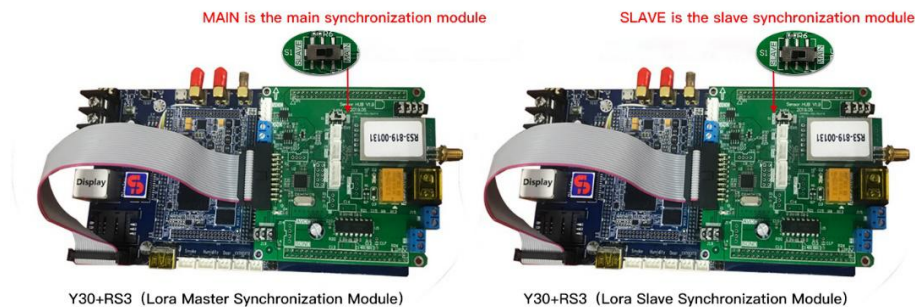
Lamp Post Sign Operation Manual



With the promotion of smart cities, smart lamp post have begun to gradually replace the old lamp post and achieving the multifunction. Lamp post sign as a media transmission has also become one of the important standard equipment in the smart lamp posts. For the cluster control synchronous playback of the lamp post sign, this manual specifically introduces the implementation steps of Lora synchronization:

1、Lamp Post Sign Solution Introduction

Y series control card and Lora module synchronous control method



Synchronization module description:

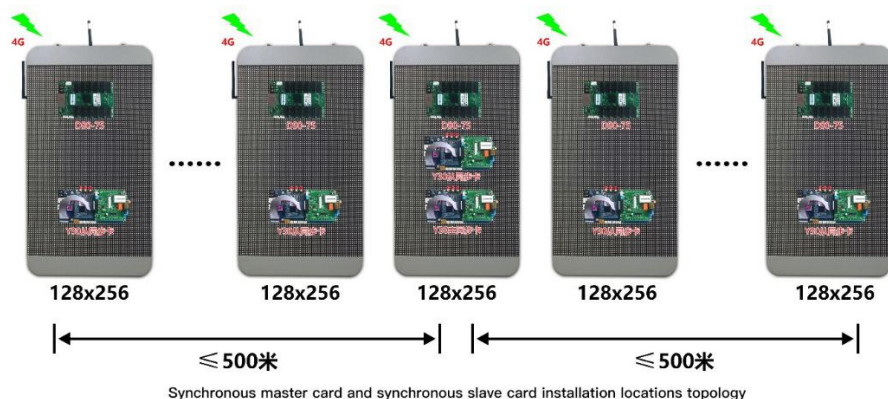
MASTER is the Lora master synchronization module; Slave is the slave synchronization module. A set of synchronous screen solutions requires one master synchronization module plus multiple slave synchronization modules and Y series control cards.

Installation location description:

The synchronization master card needs to be installed in the middle, and the synchronization slave card is installed within a 500-meter radius of the synchronization master card. (For longer distances, please communicate with

the salesman in advance to match the stronger signal equipment)

Synchronous master card and synchronous slave card installation topology:



2、Synchronization Settings

Step 1: The player versions are updated to the xixunplayer7812 version (or 7811, 961 version) that supports the synchronization function (refer to the AIPS manual online update section)

Online	Id	Alias	Group	Network Type	Last offline	width	high	brightness	volume	Screen status	sensor	Show	locking	Communication version	Player version	CardSystem	Update	Starter	BasicApp	T
✓	y30-219-84205	noname	Warehoused	Ethernet	2019-12-14 17:22:25	1280	1024	255	0	on				9.8.4	sync-T 8.12	5.2.1	7.1	starter173	1.0	
✓	y30-919-00509	noname	The third group	WiFi	2019-12-14 17:14:43	1280	512	64	12	on				9.8.4	sync-T 8.12	5.2.1	6.6	starter176	1.0	
✓	y30-919-01430	noname	Warehoused	WiFi	2019-12-14 17:20:50	128	32	68	12	on				10.1.9T	sync-T 8.12	5.2.1	6.6	starter179	1.3.1	

Step 2: Parameter configuration, select all terminals, Select "Method 1" for "Time" in "Synchronization Settings", Select "Do not synchronization" for "Brightness", "Volume" and "Screen Switch" Set a value as the synchronization code in "Synchronization identification code" (can be letters or a combination of letters and numbers) Click "Settings":

1 2 3 4 5 6 7 8 9

Program task Screenshots Real-time message Delete show Targeted delivery Live video Screen switch Screen brightness Volume control Change group Parameter configuration Hardware status

Alarm switch Update online Restart system Terminal transfer Upload log Load HTML Video Surveillance Video processor Relay configuration

Set up Inquire locking sync setting Player background advanced Backup restore Urgent test

Way 1 Way 2 Way 3

brightness Way 1 Do not sync

volume Way 1 Do not sync

Screen switch Way 1 Do not sync

Sync (Synchronization code)

Time offset (ms)

Set up Inquire

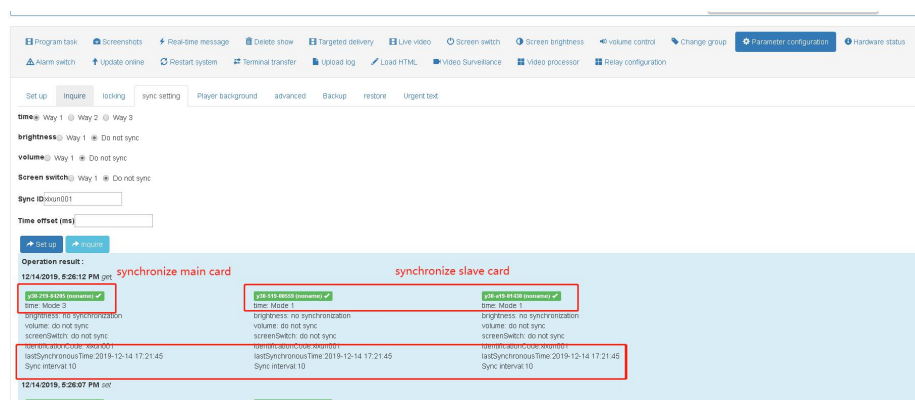
Operation result:

Step 3: After the setting is successful, select the synchronization main card terminal, Select "Method 3" for "Time" in the synchronization settings Click "Settings":



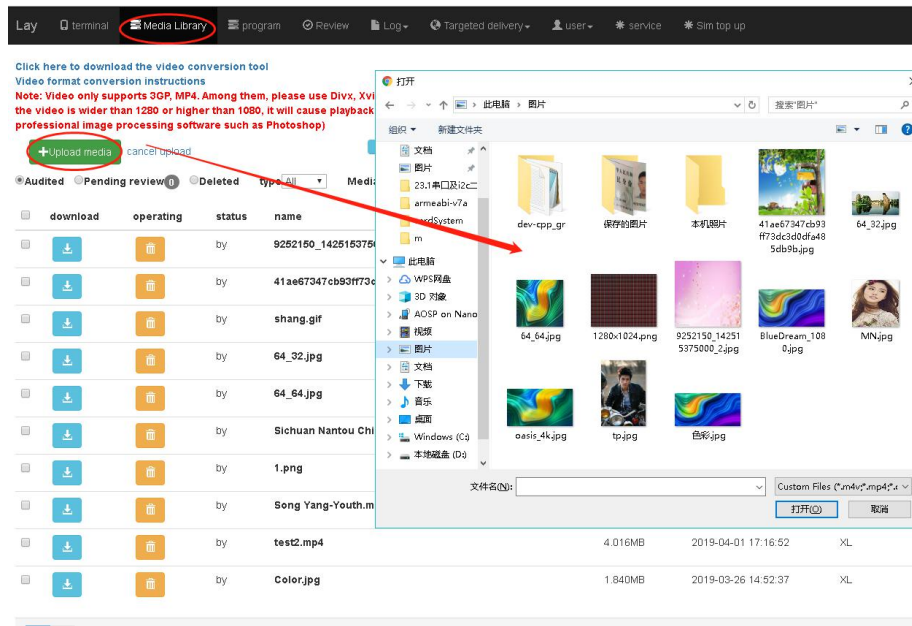
You can verify whether the configuration is successful through the "Query" button.

You can also query the synchronization time. As shown in the lastSynchronousTime below, the time value indicates that the terminal has successfully synchronized;

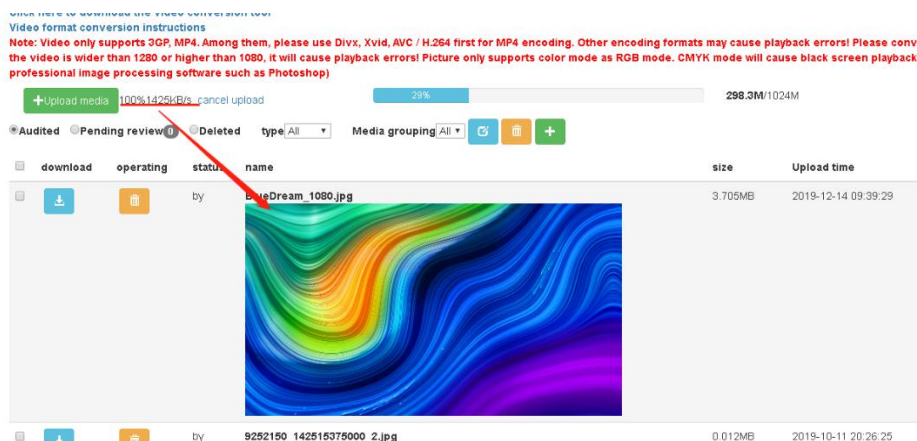


3、Create Programs

1. Upload local materials in the media library:
2. Enter the "Media Library" and upload the program material to the platform:



3. Please pay attention when uploading, wait for the platform to indicate that the upload progress is 100%, and you can see the materials are in the media library list that indicate the upload is complete. At this time you can do other operations on the platform, otherwise the upload process will be suspended due to other operations:



Note: Video only supports 3GP, MP4, as for MP4 encoding please preference for using Divx, Xvid, AVC/H.264, other encoding formats may cause playback errors! Please convert the video size to the size you want to play, or use the

video in the common proportion(320p ~ 720p). If the video is wider than 1280 or higher than 1080, it will cause playback errors! Picture color mode only supports RGB mode, CMYK mode will cause black screen playback. If the picture cannot be played, please change the picture color mode to RGB mode (requires professional image processing software such as photoshop)

4、 Create Programs

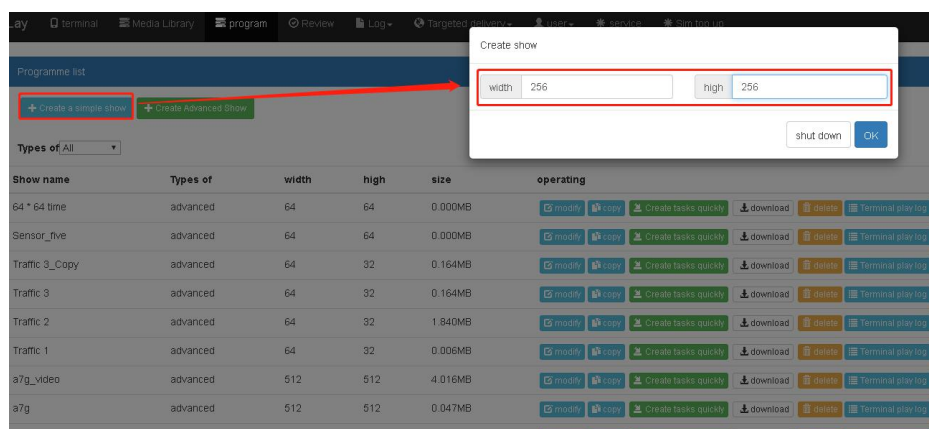
There are two types of programs: "Easy Program" and "Advanced Program".

Easy Program: Support create regular pictures and video programs

Advanced Program: Support create pictures, videos, texts, clocks, weather forecasts, and more

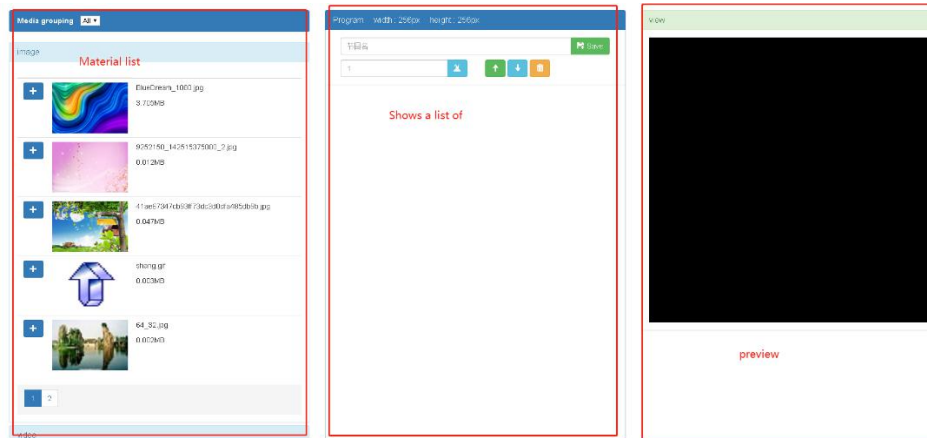
This article takes the creation of the simple program as an example: ("Create the advanced program" please refer to the AIPS cloud platform instruction manual)

1. Click "Create Simple Program" and enter the width and height pixels of the program (that are the width and height pixels of the display):

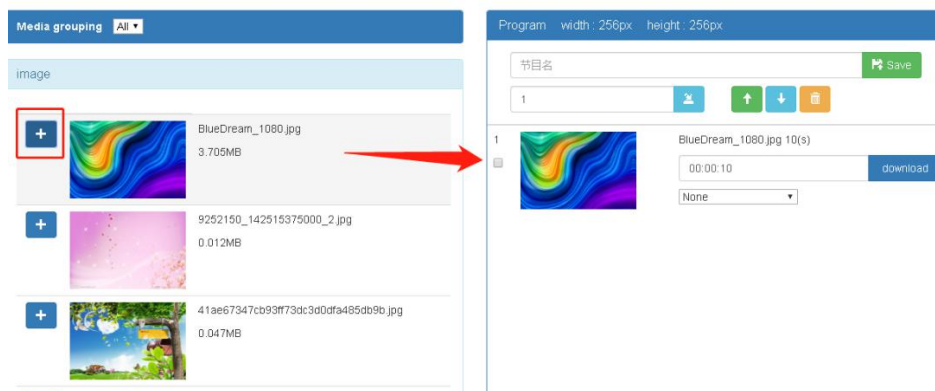


2. Enter the program editing interface. The left is the media library material,

the middle is the program list, and the right is the program preview window:



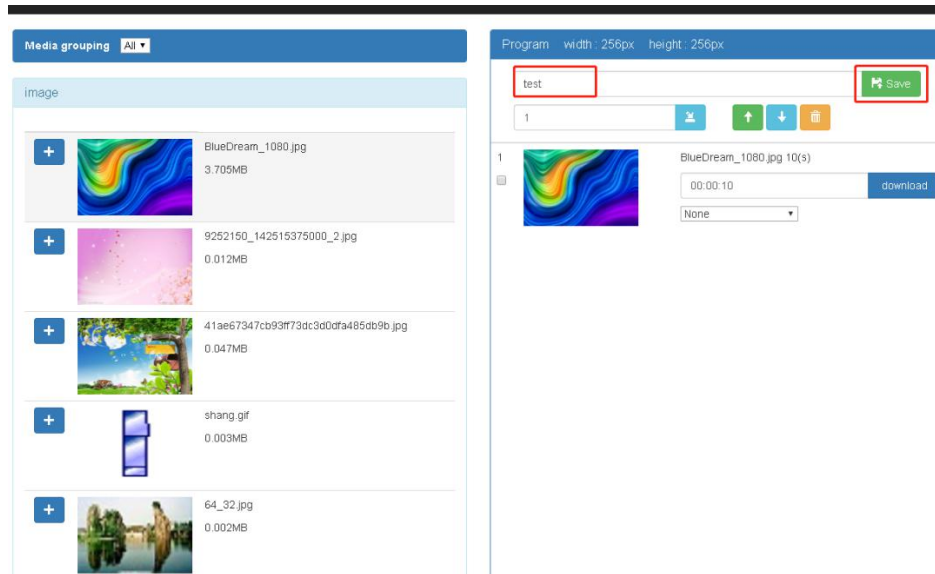
3. Click "+" in front of the left material to add the selected material to the program list:



4. After adding the materials, you can modify the picture playing time (unit is second) in the list area, move the playback order of the materials up and down, and delete the materials under the program list:



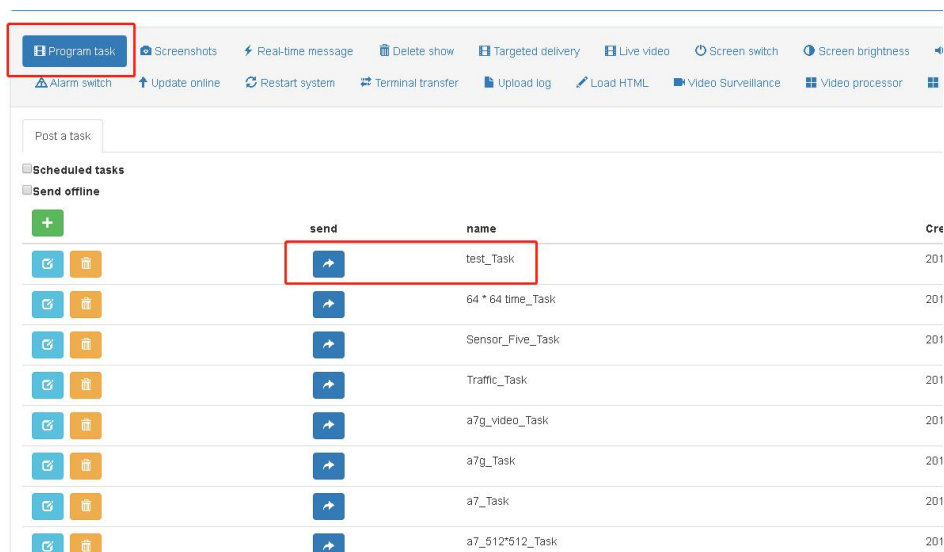
5. After the program is finished, set a name for the program and click "Save" :



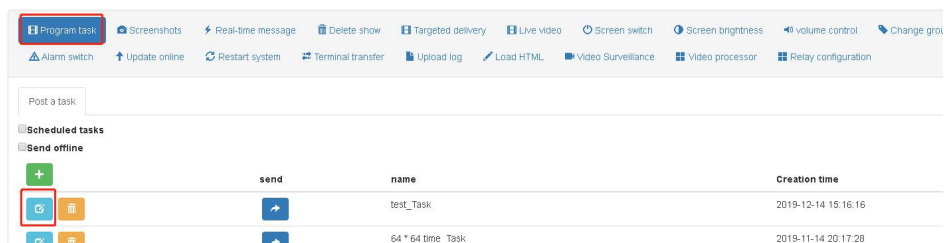
The platform automatically jumps to the create program page, and you can see the program just created:


+ Create a simple show + Create Advanced Show							
Types of: All							
Show name	Types of	width	high	size	operating		
test	simple	256	256	3.705MB	modify	copy	Create tasks quickly
64 " 64 time	advanced	64	64	0.000MB	download	delete	Terminal play log
Sensor_five	advanced	64	64	0.000MB	download	delete	Terminal play log
Traffic_3_Copy	advanced	64	32	0.164MB	download	delete	Terminal play log
Traffic_3	advanced	64	32	0.164MB	download	delete	Terminal play log
Traffic_2	advanced	64	32	1.840MB	download	delete	Terminal play log
Traffic_1	advanced	64	32	0.006MB	download	delete	Terminal play log
a7g_video	advanced	512	512	4.016MB	download	delete	Terminal play log
a7g	advanced	512	512	0.047MB	download	delete	Terminal play log
a7	simple	512	512	0.012MB	download	delete	Terminal play log

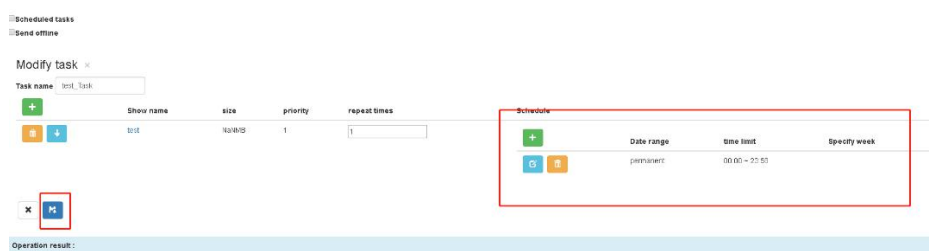
6. Click "Quick Create Task" behind the program, automatically jump to the terminal page and create the program under the program task (administrator permissions automatically jump)



7. To achieve the effect of synchronized playback, you also need to make the timed program in the program task:



Under the program task, click the edit “” of the corresponding program to enter the set time, and the program will loop playback within the set time:



8. Send the program, select all the terminals to send the produced timing programs.

FAQ:

The screens are out of sync:

1. Please check whether the synchronization antenna is connected well and whether to match
2. Check the synchronization settings and set them according to section 2 above.
3. Check if the master and slave Lora dial codes are normal
4. Whether the program have set timing
5. If synchronous main card is not synchronized recommend Lora main card does not carry the screen.